

Portfolio[®]
WINDOW COLOR COLLECTION

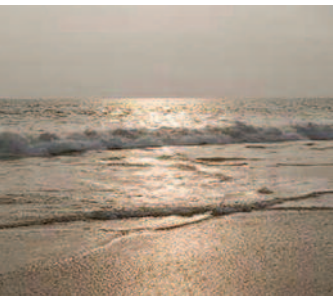
fresh style. perfect finish.



COLOR INNOVATIONS FOR TODAY'S BEAUTIFUL WINDOWS

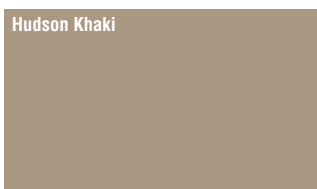


Window shown in FoxWood finish.

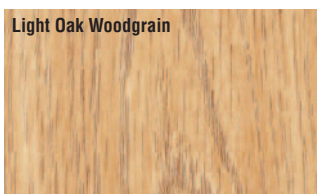
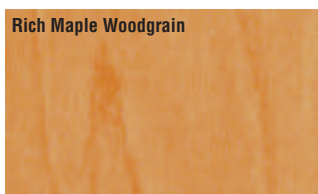
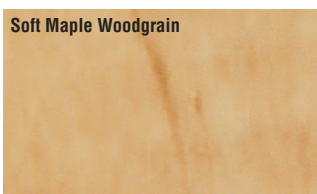
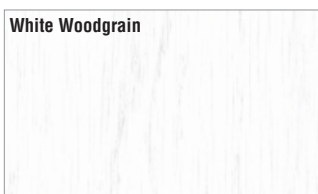


¹All exterior laminate colors shown have a White interior; American Terra also is available in a Beige interior.
²All interior woodgrains have a White or Beige exterior—except White Woodgrain, which is available in a Beige exterior only.
*Solid color, non-laminated windows.

Exterior Palette¹



Interior Palette²



CHARM, THE PORTFOLIO® WINDOW COLOR COLLECTION OFFERS A GENEROUS
 WINDOWS. THE LUXURIOUS COLORS AND WARM WOODGRAINS WILL BEAUTIFULLY REFLECT
 OF ELEGANCE TO YOUR HOME—BOTH INSIDE AND OUT.

TIMELESS QUALITY

In the Portfolio Window Exterior Color Collection, you have discovered the perfect fusion of beauty and strength. Precision-engineered with cutting-edge exterior laminate technology, this superb finish is remarkably strong and fade-resistant.

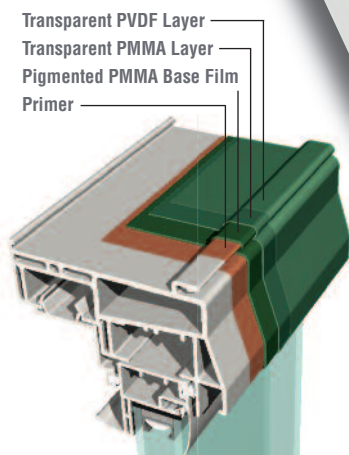
- Rich colors and natural appeal
- Matte texture to complement a variety of aesthetics
- UV-resistant for outstanding color retention
- Highly weatherable, durable and robust
- Stands up strong to extreme heat and cold
- High stability—resists cracking, scratching and chalking
- Excellent resistance to dirt, chemicals and environmental pollutants
- Ideal for seaside climates—resists damage from salt air

HIGH-PERFORMANCE EXTERIOR LAMINATE TECHNOLOGY

Laminate technology is no stranger to the rigors of performance testing. Introduced in Europe in the 1970s, this process has been perfected over the decades and long proven for outstanding strength, durability and lasting beauty.

The Portfolio Window Color Collection’s triple-layer composition expertly marries a highly resilient, transparent double layer of protection consisting of PVDF and PMMA materials to an acrylic base layer to form an extremely weatherable surface that maintains its attractive appearance over the life of the product.

Primer on the back side of the laminate combined with a special polyurethane adhesive permanently bonds the laminate finish to the window substrate. This fully cross-linked adhesive will not allow the laminate to separate from the window, despite exposure to extreme heat, cold or other environmental elements.



CAREFREE MAINTENANCE

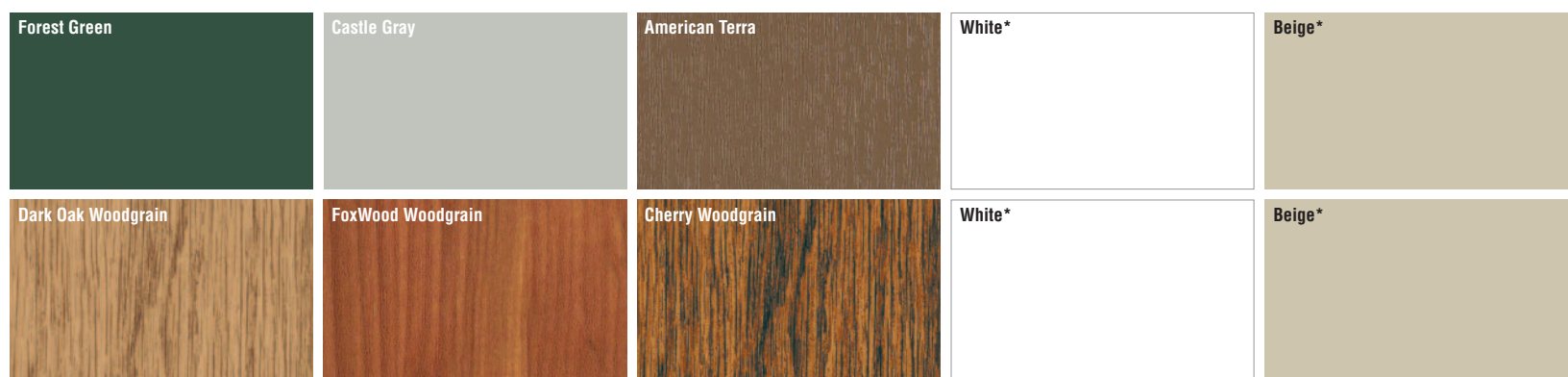
When you consider the time and expense of painting and maintaining wood windows year after year, you’ll see why Portfolio Window Color Collection laminates are a smart choice. Built with a resilient color formulation, they never need to be painted and require minimal upkeep. Just wipe with a damp cloth or use simple household cleaners to remove most dust and dirt. Even tougher challenges, such as permanent marker, can be removed using a special cleaner that won’t harm the surface or finish.

ENVIRONMENTALLY FRIENDLY

Now more than ever, homeowners are choosing eco-friendly products to help protect our planet. The Portfolio Window Color Collection never needs to be painted, which helps prevent paint, stain and other maintenance-related products from harming the earth. This visually exciting palette also lets you choose rich colors and finishes that previously were only possible with painted wood windows.



Portfolio Window Color Collection laminates are available on our premium windows in a wide variety of styles and configurations. Patio doors are also available in a matching painted exterior finish. Ask your window professional for the specific product offering.



A LIFETIME OF PROTECTION

Your premium quality windows are backed by a lifetime limited warranty—further assurance you have made an excellent selection for your home. In addition, Portfolio Window Color Collection exterior laminates carry a 10 year fade-resistance warranty rider.[†]



PORTFOLIO WINDOW COLOR COLLECTION QUALITY CERTIFICATIONS

Our commitment to quality compliance and testing ensure that the Portfolio Window Color Collection laminate finishes meet or exceed demanding test standards and criteria.

- Outdoor weathering tests performed at SKZ laboratories in Würzburg, Germany, in accordance with RAL 716/1 and EN 513-2; proven to exceed stringent requirements of the RAL Quality Guideline
- Quality assurance system certified according to DIN EN ISO 9001; guarantees compliance with rigorous test requirements and provides consistent high-quality production standards
- Continuous quality control and ongoing testing in-house and by independent laboratories



Photo courtesy of American Renolit Corporation.

WINDOW STYLES FOR EVERY NEED

Choose from our full selection of products to beautifully accentuate the architecture of your home: single hung, double hung, sliding, casement, awning, bay and bow, garden, picture and specialty shape windows and patio doors. Tested and certified to national industry standards, our windows and patio doors consistently early high marks for superior quality and performance.



P.O. Box 110 • Akron, Ohio 44309
www.gentekinc.com

Make us a part of your home.



[†]A written copy of the warranty is available by writing to: Warranty Department, P.O. Box 110, Akron, Ohio 44309. The Portfolio Window Color Collection 10 year fade-resistance warranty rider pertains to exterior laminates only.
^{††}Gentek offers a variety of products that meet the latest ENERGY STAR requirements. Consult your Gentek window dealer for the optimal glass package for your region and application. Colors are reproduced by lithographic process and may vary slightly from colors of actual product. All specifications and designs subject to change without notice. ENERGY STAR name and logo are registered U.S. marks and are owned by the U.S. government.
USGBC and related logo is a trademark owned by the U.S. Green Building Council and is used by permission.